

Curious
Responsible



Active
Respect



Creative
Brave



Lower Park School

Lower Park News 24th January 2025

Contents:

Winning House

Commendation Awards

Reception

KS1

LKS2

UKS2

Diary Dates

Community noticeboard

Winning House

The winning house this week is Blue House who may wear their own clothes to school on Monday

Commendation Awards

Alexander c

Sophie C

Noah E

William G

Jackson A

Ellie D

Benji Mc

April S

Xavier H

Eleanor G

Theo W

Star Writer Award

Naomi C

Hannah C

Oscar P

Milo K

Leo W

Isaac P

Joseph W

Florence B

Reception

There has been lots of excitement in Early Years this week, as we have had some special visitors in school. The gingerbread man and his friends were captured on camera causing a terrible mess in our classrooms! They were running around, tipping chairs over and emptying pencil pots. The children were intrigued and the video created lots of room for discussion and predictive language. Where had the gingerbread man and his friends come from? How had they got into our school? Will they come back? The children have been busy creating their own warning posters, describing the gingerbread man so that people can recognise him if he ever returns.

KS1

In Art, the KS1 children have been drawing from stills. They watched a lovely video all about nature. They decided what still they wanted to draw and they produced some fantastic drawings. They have also been practising some different drawing techniques like 'continuous line drawing' in their sketchbooks. They will begin to look at monoprinting in the coming weeks.

LOOK OUT!!!



He is bran.
He isck.
He is small.

LOOK OUT!!!



Big timer
He is small
He has red buttons

LOOK OUT!!!



He is brown.
He is small.
He has red buttons.

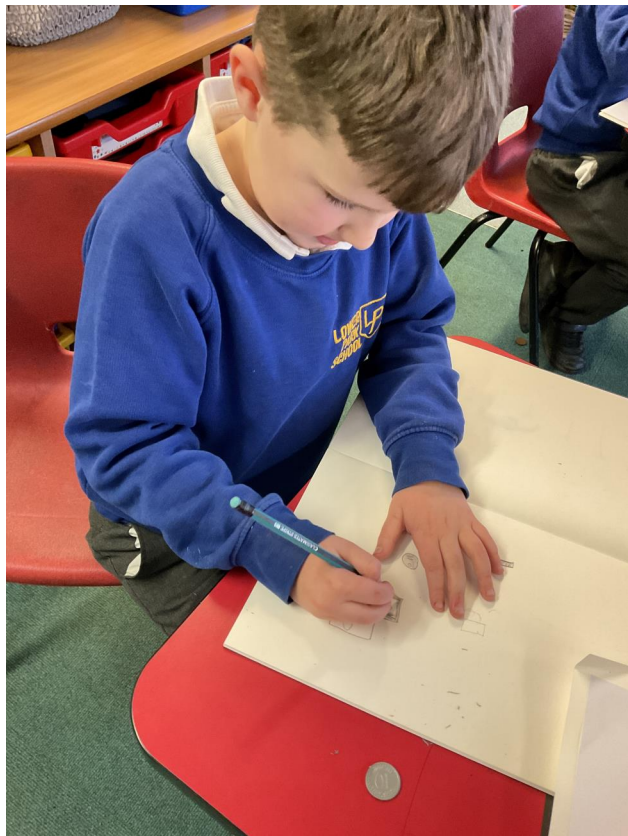
LOOK OUT!!!

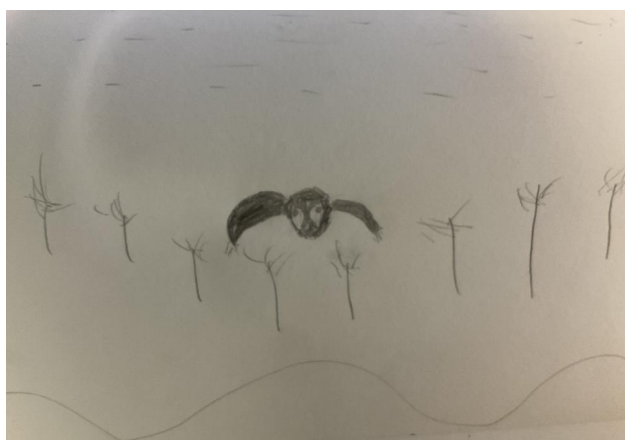
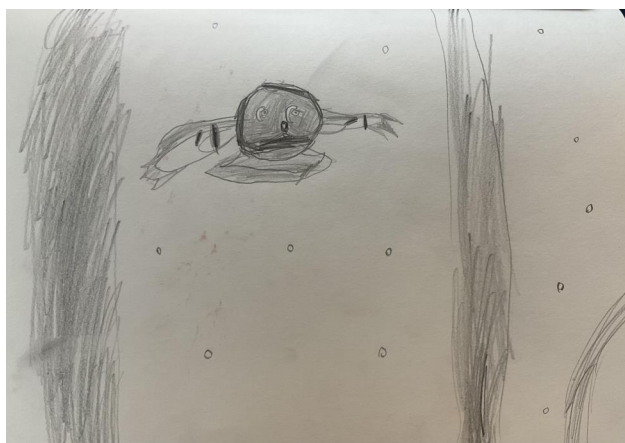


He is brown.
He is small.
He has red buttons.

Guided



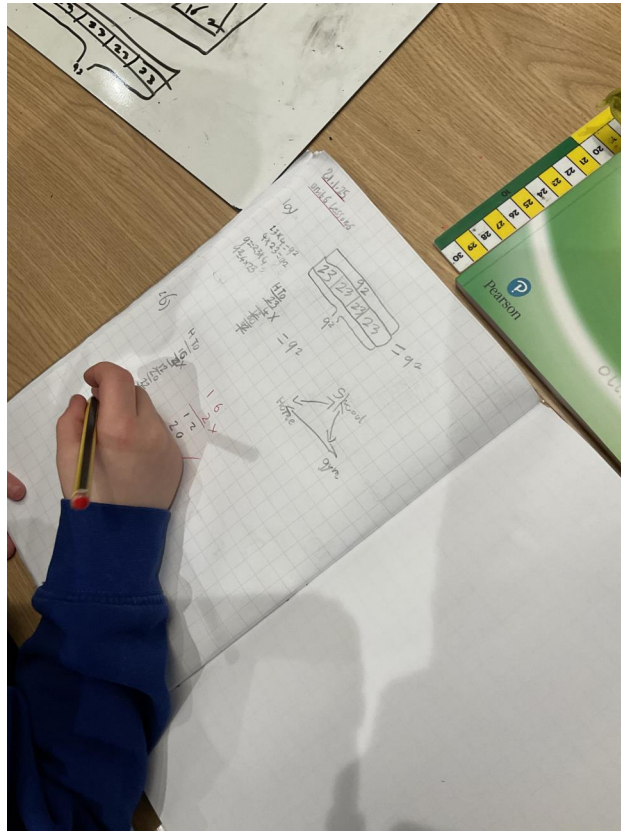


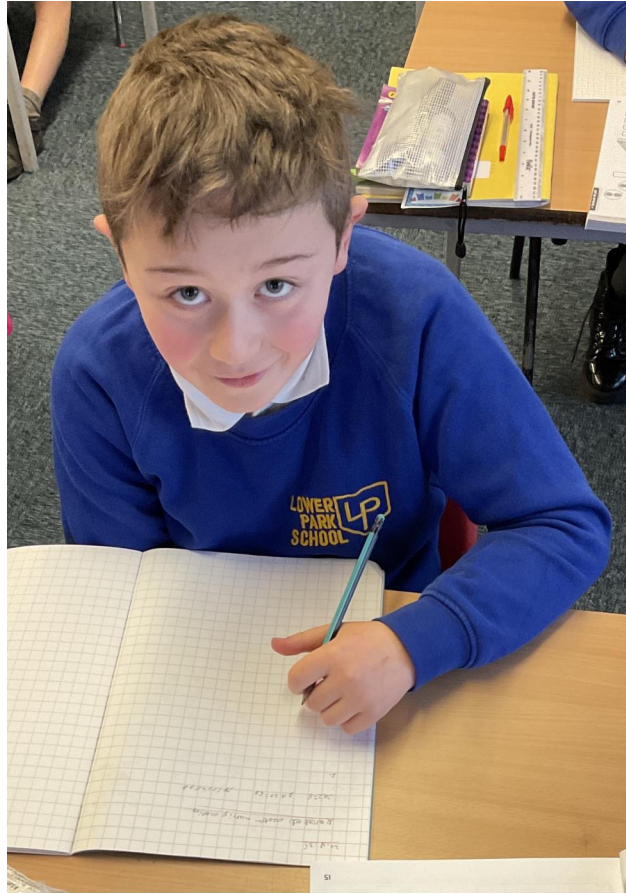


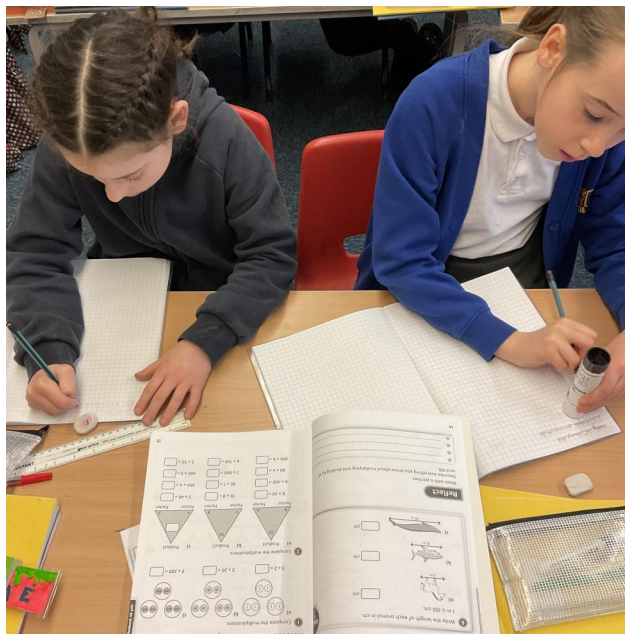
LKS2

This week we are going to share the work the children have been doing in maths. We have been focusing on long multiplication and the children have been looking at different strategies to do large multiplication equations such as 34×5 in year 3 and 357×4 in year 4. These strategies

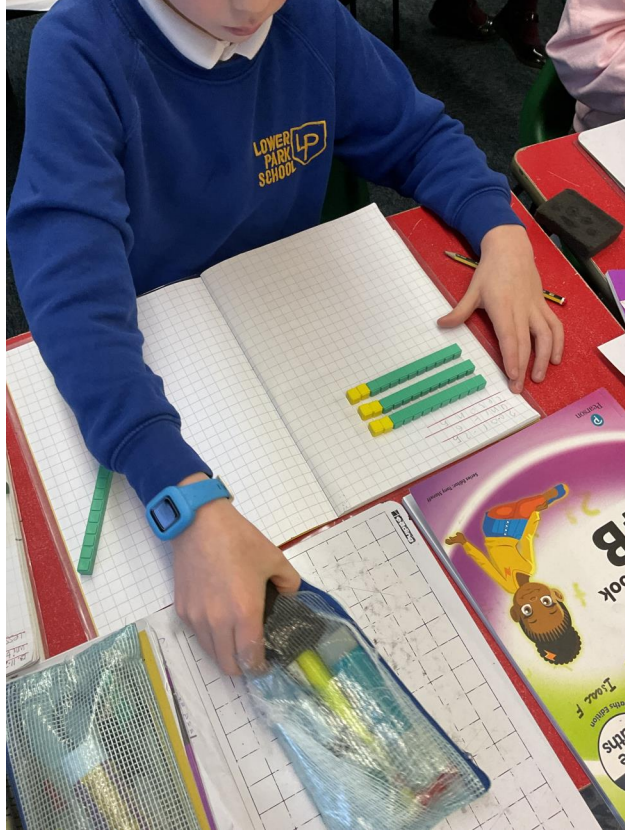
take some time get used to but the children have done an excellent job. Problems such as 34×5 can be done by doing $4 \times 5 = 20$, $30 \times 5 = 150$, and then when we add them together we get 170 and they have been able to solve many calculations. This knowledge has then been used to solve more complex word problems.

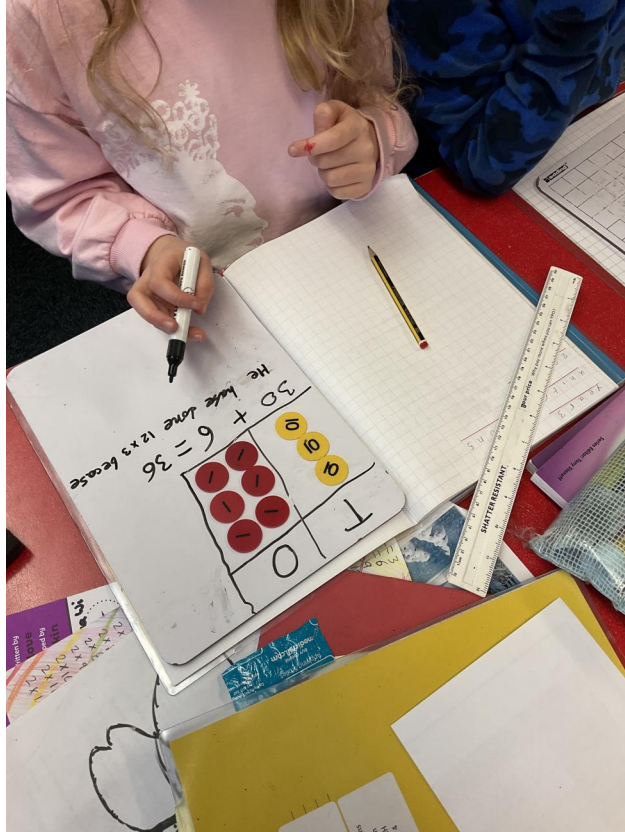


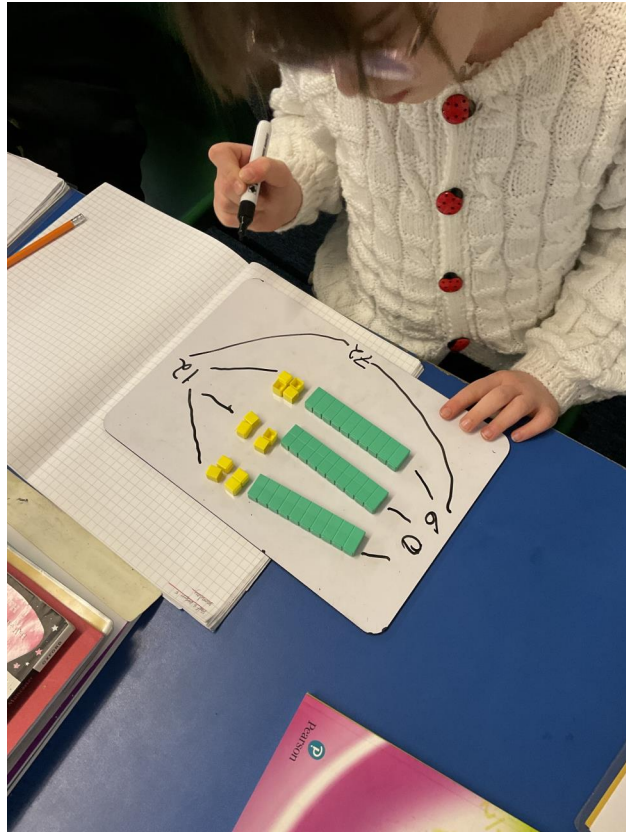












Unit 6: Multiplication and division (3), Lesson 6

Expanded written method

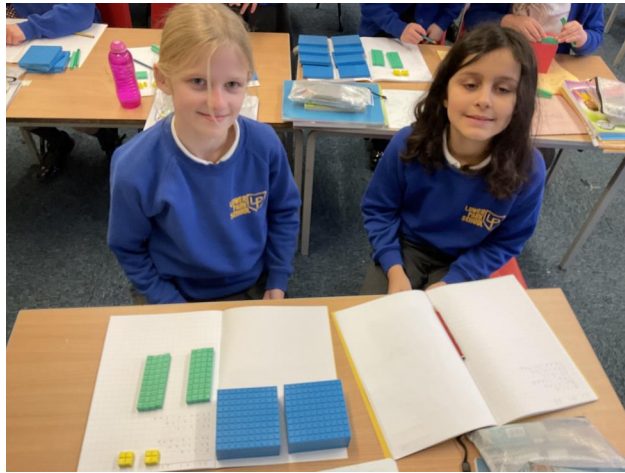
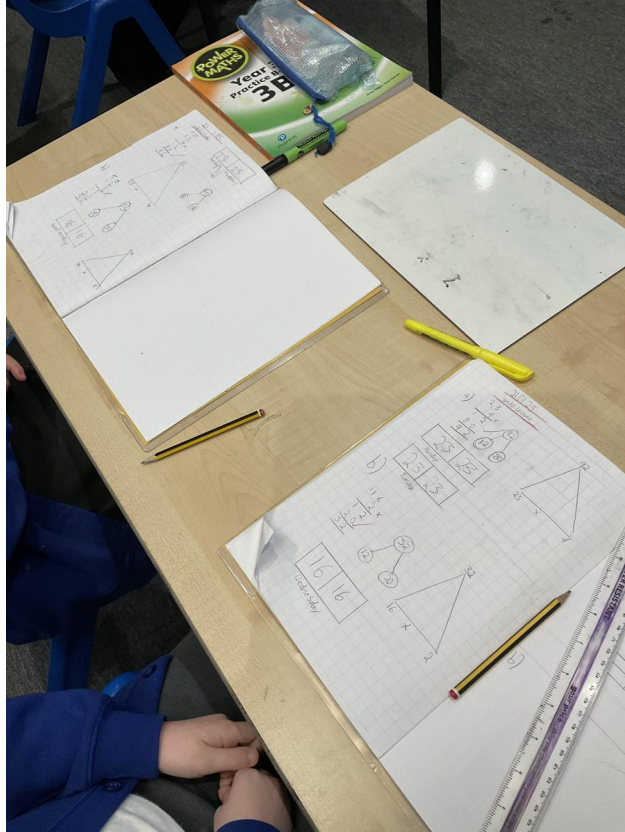
Discover

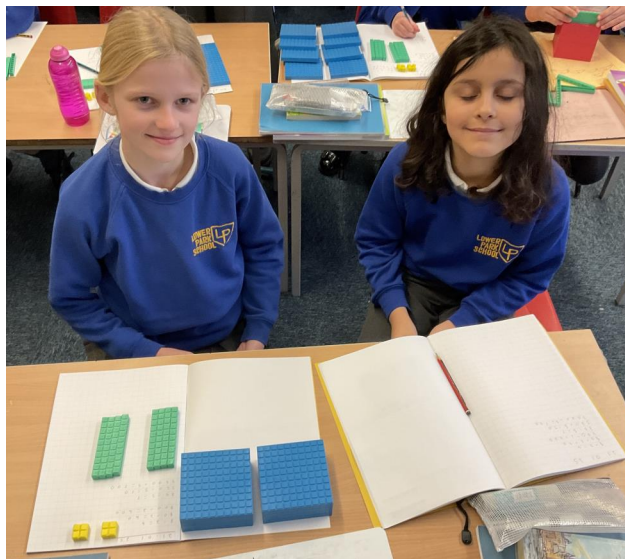
1 a) Mrs Dean travels from home to school and back again on Monday and Tuesday.
How far does she travel in total on Monday and Tuesday?

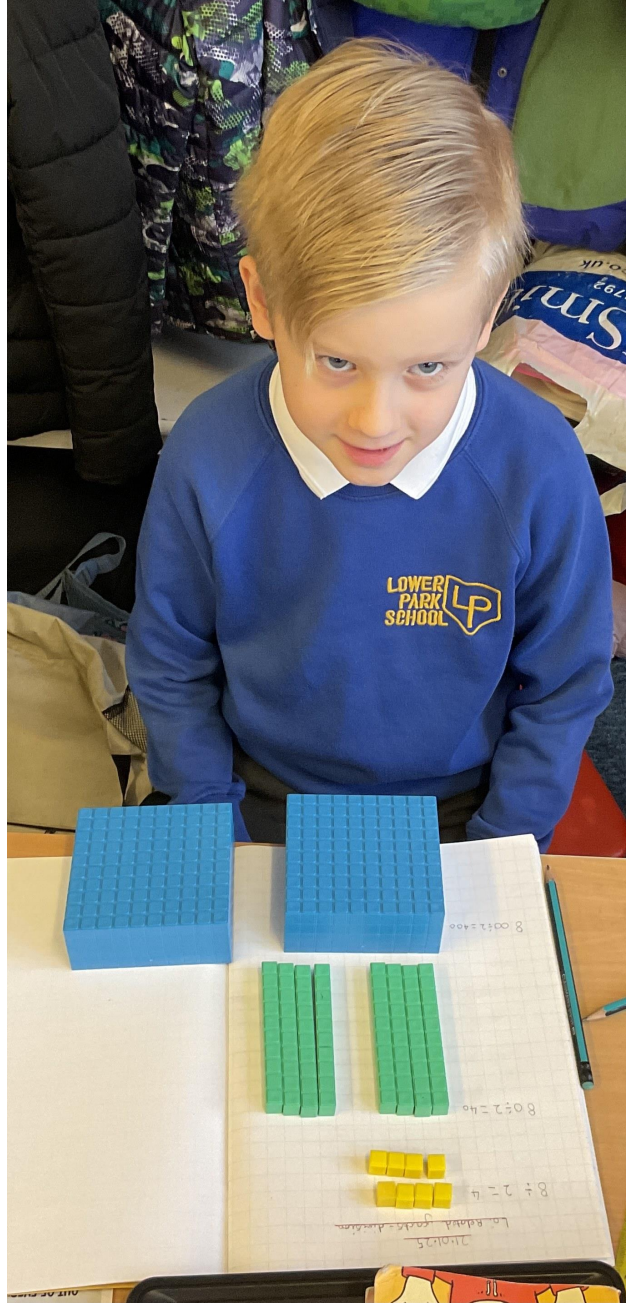
b) On Wednesday, Mrs Dean goes straight to the gym and then on to school.
What is the total distance she travels from home to school on Wednesday?

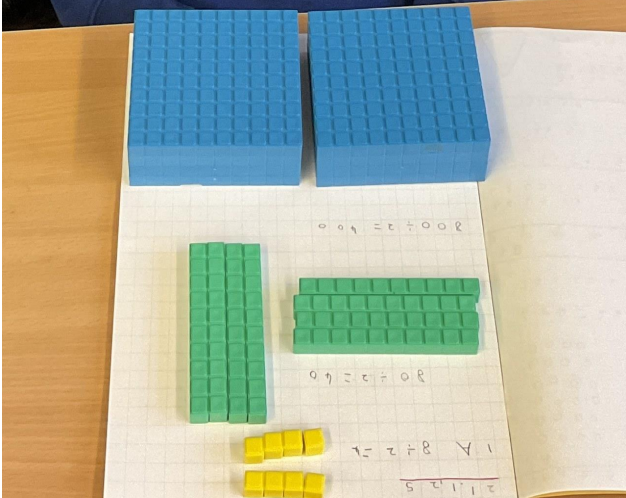
28

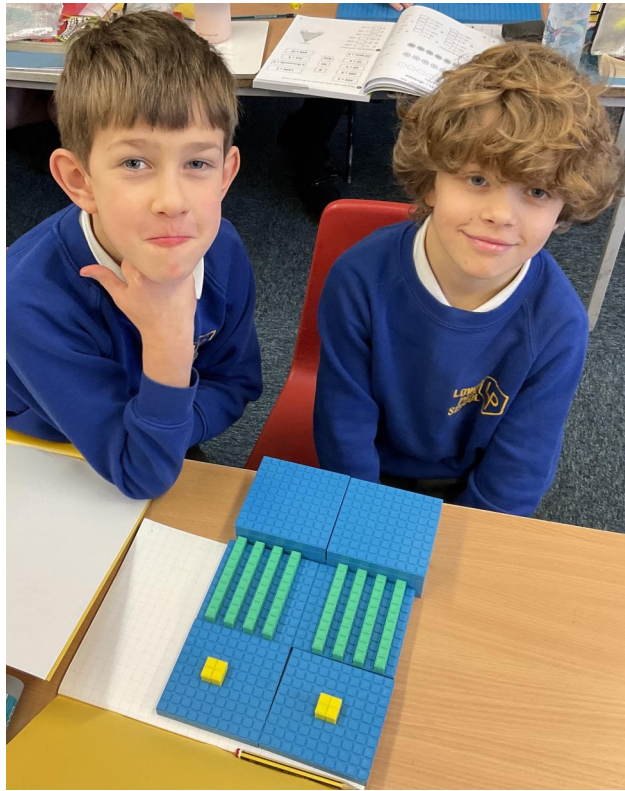
Windows Search bar and taskbar icons are visible at the bottom of the screen.



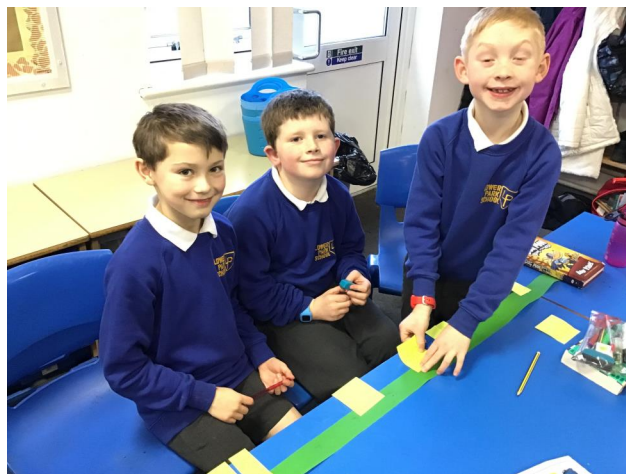
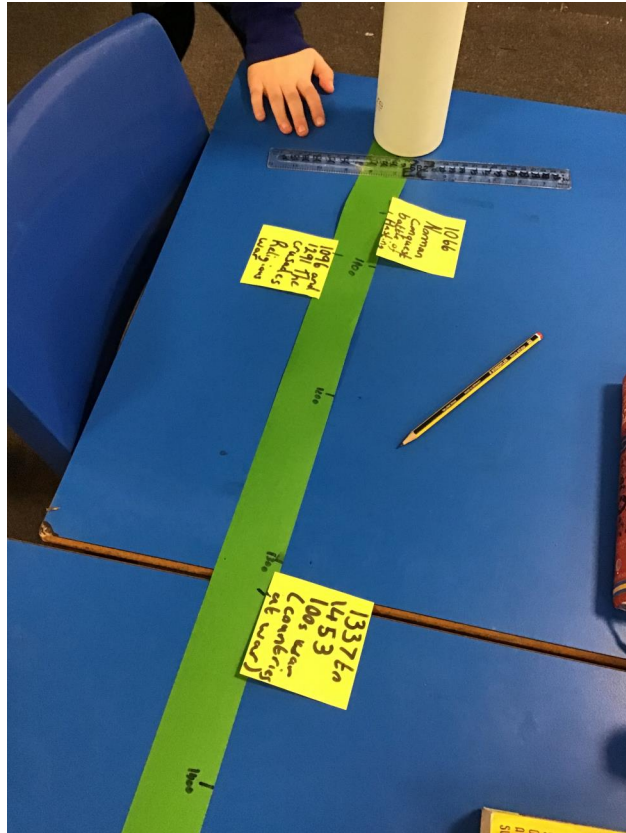








We can't wait to see their imaginative ideas come to life! Keep an eye out for updates on their progress.





Sports Update

It has been a busy week for sports...

Well done to the boys' football team who played their first match of 2025 in style. They played away against Cheadle Hulme Primary School and scored a fantastic 12 goals vs 2!

The U9s girls took part in a Macclesfield football tournament at Wilmslow High School. For some, this was their first-ever tournament. The girls were incredible and grew in confidence throughout the afternoon, winning their last two games with some terrific goals. The future is bright for this developing squad!

The Year 6s participated in a Sports hall athletics competition with other schools from the Trust.



Lower Park School Vision Survey

Lower Park School Vision Survey

At Lower Park, we are revisiting our long term strategic plan and would welcome input from our whole community via a survey. Thank you to those you have already responded; we really want to hear your voice on this.

Your opinions are invaluable as we shape the future of Lower Park School over the next five years. This survey is designed to gather feedback on various areas of our school life based on our current vision and mission. Your responses will help us ensure that we are meeting the needs of our children, families, and the wider community. The survey is anonymous, and your honesty is greatly appreciated. Many thanks

[Click here to complete the survey](#)

RSPB Big Garden Birdwatch



In Monday's assembly we looked at how important it is to look after our birds. Message from the RSPB:

This year's [RSPB Big Garden Birdwatch](#) runs from 24th to 26th January 2025. Almost 328,000 people have already signed up, so we're well on track to beat the over 600,000 people across the UK who participated last year! (Wow!) Why not join them? Help nature by taking part in this fun event on your own or with friends and family. You can do it just about anywhere, too—no garden necessary, and it just takes one hour.

School lunches

We're so happy to hear all the positive feedback about our new lunch menu! It's great to see that the children are enjoying their meals. As our catering team is now responsible for ordering, we want to thank you for your continued support in filling out the Spider surveys. Your input helps us provide the meals the children love, reduce waste, and make sure no one is disappointed.

We also kindly ask that, where possible, you prepay for lunches and keep payments up to date. Please note that children with arrears of over £30 won't be able to order hot meals until the balance is cleared.

Thank you again for your support!

Dates for the diary



Diary dates for Spring 2025

Wednesday 29th January - 5:00 pm Year 6 SATs information evening

Saturday 1st February - PTA Family Bingo

3rd-7th February - Mental Health Awareness week including DRUHM workshops

Tuesday 4th and Wednesday 5th February - Parents' Evening

Monday 10th - Friday 14th Halliard Trust Ignite Creativity Week (more details to follow)

Monday 10th- Thursday 13th February - KS1 Local history walks

Tuesday 11th February - Safer Internet Day

Friday 14th February - last day before school closes for half term

Monday 24th February - INSET day

Tuesday 25th February - school opens

Community noticeboard



NHS
Providing NHS services

No appointment necessary

Waiting for an appointment?

Did you know that your local Well Pharmacy can give you FREE confidential advice and treatments on the below conditions, without an appointment.

Choose Pharmacy first

- ◆ Urinary tract infection (UTI)*
- ◆ Sore throat
- ◆ Sinusitis
- ◆ Earache
- ◆ Impetigo
- ◆ Shingles
- ◆ Infected insect bites

Subject to eligibility, suitability and availability of a trained pharmacist, and at the professional discretion of the pharmacist. *UTI in women only.

+well Pharmacy



Five Rivers.
Turning children's lives around



If you are interested in a life-changing vocation and can provide a safe, loving home to a child in care, we'd love to hear from you.

01527 834653
0333 0603 962
five-rivers.org

Your local office: Unit 28 Basepoint Business Centre, Isidore Road, Bromsgrove, B60 3ET

Short term and long term foster carers needed. Highly competitive fostering allowance of up to £28,000 a year, tax-free, 24/7 support and specialist training. Potential to combine with full or part-time work.

Foster carers turn children's lives around - come and foster with us



Supporting emotional health and wellbeing from 0-19+

Free online courses for all parents, carers, grandparents and teens

- Antenatal and postnatal baby bonding
- Understanding your child or young person
- Your child or young person with additional needs
- Teenager's feelings and brain development
- And lots more specialist courses

Designed by clinical psychologists in partnership with practitioners and parents

Residents of **CHESHIRE EAST**

In paid partnership with:  

Use Access Code **WHEATSHEAF**

www.inourplace.co.uk



Cheshire East Family Hubs is excited to announce the official launch of its recent partnership with the Solihull Approach; trusted NHS provider of online courses focused on children's emotional health and wellbeing. Through this collaboration, Cheshire East Family Hubs funds a multi-user license, enabling all residents within the council's area to access a comprehensive range of online courses on www.inourplace.co.uk at no cost.



every lesson

IMMEDIATE START AVAILABLE **SWIM SAFE & STRONG**

SCAN HERE



Includes **FREE** public swimming for children enrolled on direct debit lessons.

To enquire or book, email support@everybody.freshdesk.com

Official Partner of 



SWIMMING LESSONS AT EVERYBODY HEALTH & LEISURE



1. ADULT AND CHILD CLASSES

Baby and Toddler Age under 3 years
Our Adult and Child classes allow parents to be in the water with their child to help gain confidence in the water.

2. DUCKLINGS AWARDS 1-4

Age 3+
Ducklings 1 will see children start to move by themselves in the water. By Ducklings 4 they will be jumping in, going underwater, floating and travelling.

3. LEARN TO SWIM STAGES 1-7

Age 4+
Stages 1-7 are divided into progressive stages. We base our programme around the Swim England framework.

FURTHER SWIMMING PATHWAYS

Children can choose from a range of different pathways once they pass stage 7, such as stages 8, 9 and 10 or our rookie lifeguard programme.

JUNIOR LESSON PRICES
Monthly Direct Debit - £34.99

JUNIOR CONCESSION PRICES
Discounted swimming lessons are available through our Everybody Options scheme. Check your eligibility online or contacting us. £21.99 joining fee required.

9 Swimming pools

- Swimming pool
- Gym/Fitness
- Athletics track
- Spa facilities

ALPHA SWIM
Disability Swimming Lessons: Age 4-17
Swimming lessons for young people with a disability or additional need. These lessons are a basic introduction to swimming to encourage children to have fun, be more relaxed in the water while learning basic water skills.



The Children's Bladder and Bowel Society

These FREE webinars are designed for parents and carers who have children facing challenges related to the bowels and bladder. Our aim is to give you more information about interventions that can be offered to manage ongoing bowel emptying problems, prevent soiling, constipation and bed wetting.

Talking more about poo
January 14th 7pm-8.30pm

Talking about wee and poo
January 16th 7pm-8.30pm

Talking more about wee
January 21th 7pm-8.30pm





MACCLESFIELD FC COMMUNITY SPORTS TRUST IN
PARTNERSHIP WITH POYNTON TOWN COUNCIL



FREE MULTISPORT ACTIVITIES

For ages 5-11
REFRESHMENTS PROVIDED

TUESDAY 4TH AND 11TH FEB 4PM - 5PM

POYNTON CIVIC HALL, OFF PARK LANE, SK12 1RP



TOURMALINE AND THE MUSEUM OF MARVELS TRAIL

When: Friday 14th Feb - Sat 1st March

Museum opening hours (Wed - Sat, 10.00 - 4.00)

Where: Silk Museum, Macclesfield, SK11 6TJ

Further Details: Free to enter / thesilkmuseum.co.uk

Enter the drawing competition for the chance to win a signed book bundle and a National Art Pass! See the Tourmaline Trail activity sheet for details.



#Tourma lineTrail
@kidsinmuseums kidsinmuseums.bsky.social
@littletigerbooks LittleTigerUK
www.littletiger.co.uk



Illustrations © Sharnal King-Clay